

Company: Esso Australia Pty. Ltd.

Well: A12a

Field: Fortescue

Rig: Rig 175

Country: Australia

4 1/2" HSD PowerJet Omega
Perforation Record

Rig: Rig 175
Field: Fortescue
Location: Bass Strait
Well: A12a
Company: Esso Australia Pty. Ltd.

LOCATION	
Bass Strait	Elev.: K.B. 42.49 m
Gippsland Basin	G.L. -69 m
	D.F. 42.49 m

Permanent Datum:	Mean Sea Level	Elev.: 0 m
Log Measured From:	Rotary Table	42.5 m above Perm. Datum
Drilling Measured From:	Rotary Table	

State: Victoria	Max. Well Deviation 64 deg	Longitude 148° 16' 36.62"E	Latitude 38° 24' 31.39"S
-----------------	----------------------------	----------------------------	--------------------------

Logging Date	8-Apr-2007
Run Number	1
Depth Driller	4040 m
Schlumberger Depth	3950 m Not Tagged
Bottom Log Interval	3885 m
Top Log Interval	3879 m
Casing Fluid Type	Inhibited Seawater
Salinity	
Density	8.55 g/cm3
Fluid Level	
BIT/CASING/TUBING STRING	
Bit Size	8.500 in
From	0 m
To	4040 m
Casing/Tubing Size	7.000 in
Weight	26 lbm/ft
Grade	L-80
From	0 m
To	4040 m
Maximum Recorded Temperatures	
Logger On Bottom	8-Apr-2007 15:15
Unit Number	3829 AUSL
Recorded By	Owen Darby, Brendan Donahoe
Witnessed By	Gary S, Robert S & Glen C

PVT DATA				Run 1	Run 2
Oil Density					
Water Salinity					
Gas Gravity					
Bo					
Bw					
1/Bg					
Bubble Point Pressure					
Bubble Point Temperature					
Solution GOR					
Maximum Deviation	64 deg				
CEMENTING DATA					
Primary/Squeeze	Primary				
Casing String No					
Lead Cement Type					
Volume					
Density					
Water Loss					
Additives					
Tail Cement Type					
Volume					
Density					
Water Loss					
Additives					
Expected Cement Top					
Logging Date					
Run Number					
Depth Driller					
Schlumberger Depth					
Bottom Log Interval					
Top Log Interval					
Casing Fluid Type					
Salinity					
Density					
Fluid Level					
BIT/CASING/TUBING STRING					
Bit Size					
From					
To					
Casing/Tubing Size					
Weight					
Grade					
From					
To					
Maximum Recorded Temperatures					
Logger On Bottom					
Unit Number					
Recorded By					
Witnessed By					

Date Created: 8-APR-2007 17:37:14

Logging Cable

Type:	7-46ZV-XS
Serial Number:	76371
Length:	5999.99 M
Conveyance Method:	Wireline
Rig Type:	Offshore Fixed

Log Sequence:	Subsequent Log In the Well
Reference Log Name:	FTA A12a LWD RT 200MD
Reference Log Run Number:	N/A
Reference Log Date:	30-Mar-2007

1. Correlated to LWD log provided by Schlumberger D&M
2. Used IDW as primary depth control
3. Used Z-Chart as secondary depth control
- 4.
- 5.
- 6.

THE USE OF AND RELIANCE UPON THIS RECORDED-DATA BY THE HEREIN NAMED COMPANY (AND ANY OF ITS AFFILIATES, PARTNERS, REPRESENTATIVES, AGENTS, CONSULTANTS AND EMPLOYEES) IS SUBJECT TO THE TERMS AND CONDITIONS AGREED UPON BETWEEN SCHLUMBERGER AND THE COMPANY, INCLUDING: (a) RESTRICTIONS ON USE OF THE RECORDED-DATA; (b) DISCLAIMERS AND WAIVERS OF WARRANTIES AND REPRESENTATIONS REGARDING COMPANY'S USE OF AND RELIANCE UPON THE RECORDED-DATA; AND (c) CUSTOMER'S FULL AND SOLE RESPONSIBILITY FOR ANY INFERENCE DRAWN OR DECISION MADE IN CONNECTION WITH THE USE OF THIS RECORDED-DATA.

OTHER SERVICES2
OS1:
OS2:
OS3:
OS4:
OS5:

REMARKS: RUN NUMBER 2

Correlated to LWD provided by Schlumberger D&M.












RIH with a 6" Gauge Ring, CCL and Junk Basket to the advised depth of

3879 – 3885m MDKB.

Make-up 4-1/2" HSD guns loaded with 12 SPF, Omega charges with GR/CCL

for correlation. Correlate to I WD

for correlation. Correlate to LWD					
RIH, correlate on depth and perforate the approved interval. POOH with spent					
guns. R/D conductor line.					
RIH with the Gauge Ring, CCL and Junk Basket to below the lowermost packer					
setting depth = 3920m MDKB.					
Perforation Interval = 3879 – 3885m MDKB					
Schlumberger Crew:					
Operators = Rick Murray & Luke Dooley (Days)					
Ben Taylor & Zeb Casey (Nights)					
Specialist = Owen Darby & Brendan Donohoe					
RUN 1			RUN 2		
SERVICE ORDER #:		L0501H001	SERVICE ORDER #:		
PROGRAM VERSION:		14C0-302	PROGRAM VERSION:		
FLUID LEVEL:			FLUID LEVEL:		
LOGGED INTERVAL	START	STOP	LOGGED INTERVAL	START	STOP

EQUIPMENT DESCRIPTION					
RUN 1			RUN 2		
SURFACE EQUIPMENT			SURFACE EQUIPMENT		
DOWNHOLE EQUIPMENT			DOWNHOLE EQUIPMENT		
PEH-B PEH-B		5.81	PEH-B PEH-B		9.26
AH-166 AH-166		5.26	AH-166 AH-166		8.72
PGGT-D 156 PGGC PGGH-D		4.96	PGGT-D 156 PGGC PGGH-D		8.41
Gamma Ray	___ 1.07		Gamma Ray	___ 1.07	
CCL Casin Tension	___ TOOL ZERO		CCL Casin Tension	___ TOOL ZERO	
AH-283 5002		3.17	AH-283 5002		6.63
AH-JB Weight AH-JB Weight		3.10	AH-Dual port firing head AH-Dual port firing head		6.55
			AH-4 1/2" HSD Gun AH-4 1/2" HSD Gun		6.17



TOOL BOTTOM

MAXIMUM STRING DIAMETER 6.00 IN
MEASUREMENTS RELATIVE TO TOOL ZERO
ALL LENGTHS IN METERS

A diagram of a vertical tool. It consists of a long, thin, gray rectangular shaft. At the bottom of the shaft is a small, dark gray rectangular base. Below the base is a horizontal line, and below that is the text "TOOL BOTTOM".

TOOL BOTTOM

MAXIMUM STRING DIAMETER 4.50 IN
MEASUREMENTS RELATIVE TO TOOL ZERO
ALL LENGTHS IN METERS

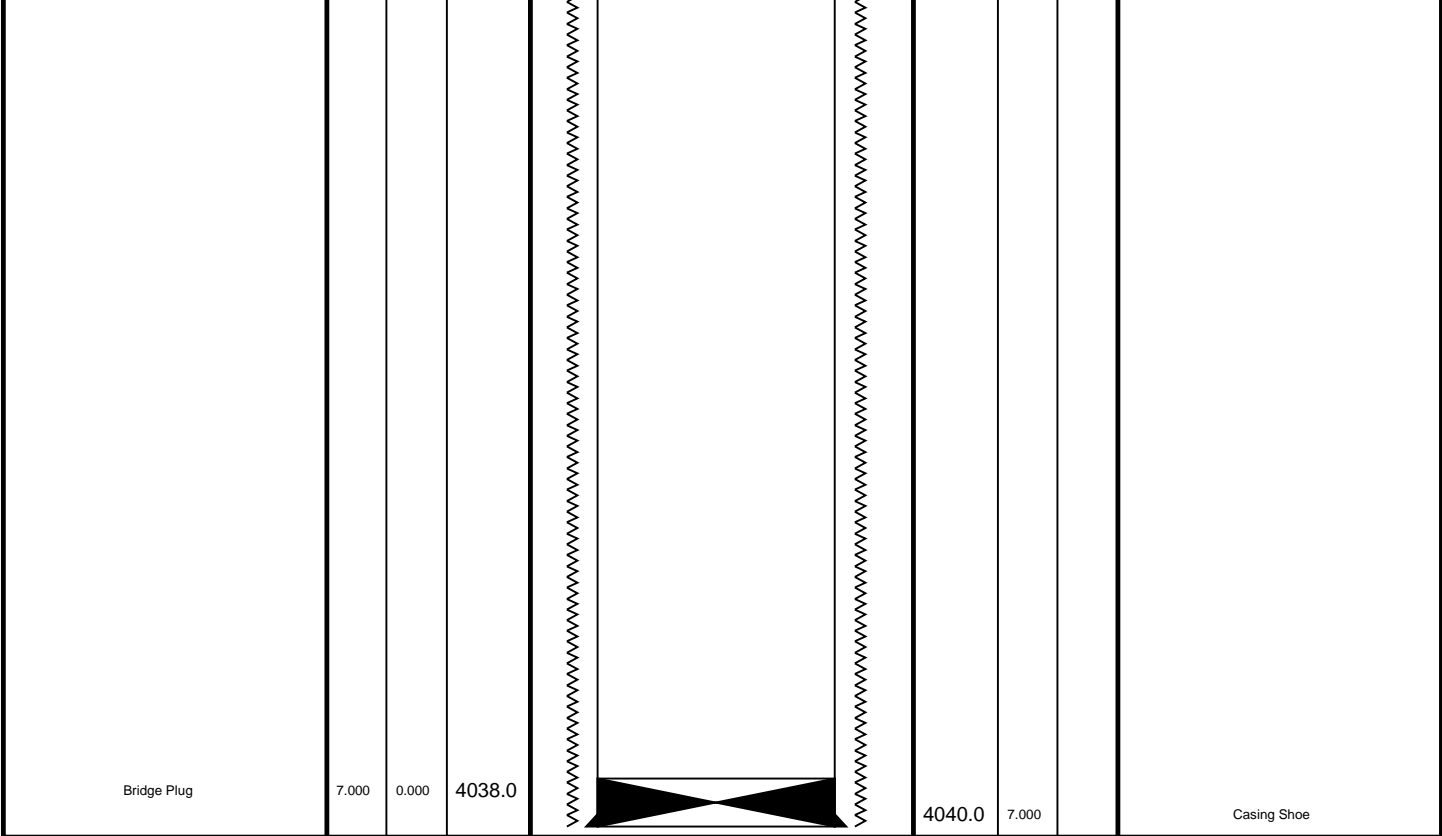
Drawing Date: 4/13/2007

Rig Name: Fortescue

Reference Datum: Mean Sea Level

Elevation: 42.5 m

Production String	(in)	(m)	Well Schematic		(m)	(in)	Casing String
	OD	ID	MD		MD	OD	ID
					0.0	8.600	
							Borehole Segment Casing String, 38.8 kg/m, L-80



Job Events Summary

MAXIS Field Log

Schlumberger Job Event Summary

Time	Elapsed Time	Depth (M)	File
Simulated Log	6-Apr-2007 16:18	000:08	PERFO_002LUP
OP Checked toolstring	8-Apr-2007 12:30		
Rig Up Started	8-Apr-2007 12:30		
Simulated Log	8-Apr-2007 12:30	000:03	PERFO_006LUP
Hot checked toolstring for first Junk basket run			
Log Pass (down)	8-Apr-2007 12:58	002:14	46.3 – 3952.6 PERFO_008LDP
RIH with junk basket			
Log Pass (up)	8-Apr-2007 15:20	000:06	3901.7 – 3803.4 PERFO_010LUP
Correaltion pass			
Log Pass (up)	8-Apr-2007 15:46	000:09	3690.8 – 3292.8 PERFO_013LUP
POOH with junk basket			
Simulated Log	8-Apr-2007 18:59	003:20	PERFO_024LUP
Hot check for gun run			
Log Pass (down)	8-Apr-2007 23:57	000:52	674.1 – 3000.7 PERFO_026LDP

Log Pass (down) 8-Apr-2007 23:57 000:32 874.1 - 3909.7 PERFO_026LDP
RIH for perforation
Log Pass (up) 9-Apr-2007 1:08 000:08 3915.3 - 3834.4 PERFO_030LUP
Correaltion pass
Log Pass (up) 9-Apr-2007 1:22 000:57 3914.9 - 3764.3 PERFO_031LUP
Shooting pass
Log Pass (down) 9-Apr-2007 5:13 001:21 13.4 - 3950.4 PERFO_039LDP
RIH with junk basket
Log Pass (up) 9-Apr-2007 6:38 000:12 3951.1 - 3840.8 PERFO_042LUP
Junk basket correaltion pass
Rig Down Completed 9-Apr-2007 9:00

Schlumberger

Junk Basket Run # 2 Correaltion Pass

MAXIS Field Log

Company: Esso Australia Pty. Ltd.

Well: A12a

Output DLIS Files

DEFAULT PERFO_042LUP FN:41 PRODUCER 09-Apr-2007 06:38 3951.1 M 3840.8 M

OP System Version: 14C0-302

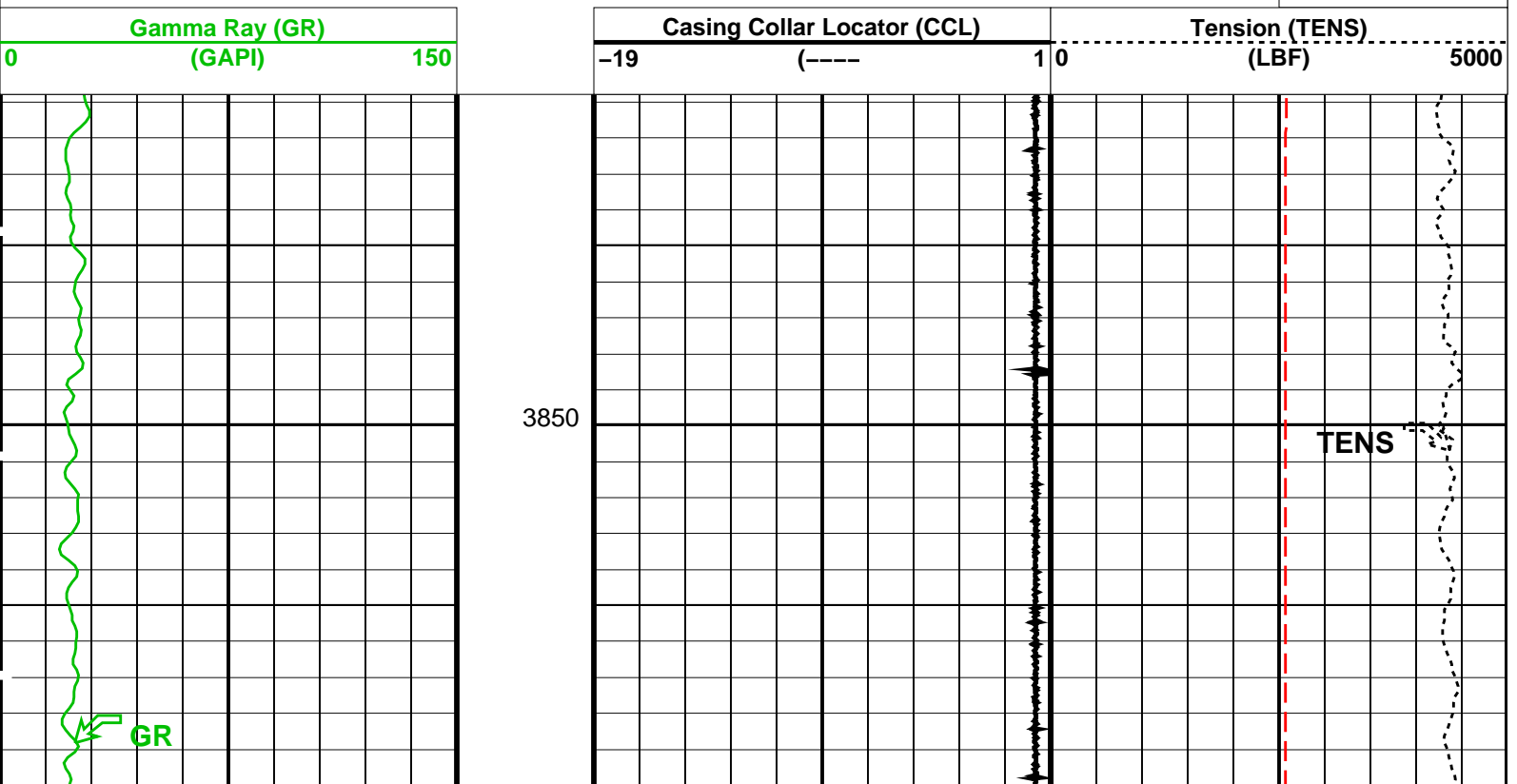
MCM

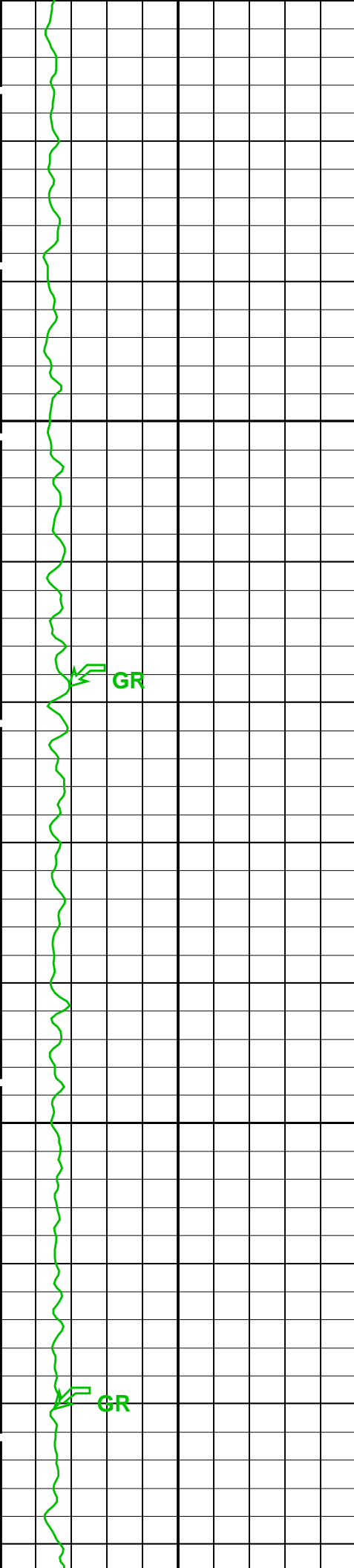
PGGT-D 14C0-302 SHM_GUN 14C0-302

PIP SUMMARY

Time Mark Every 60 S

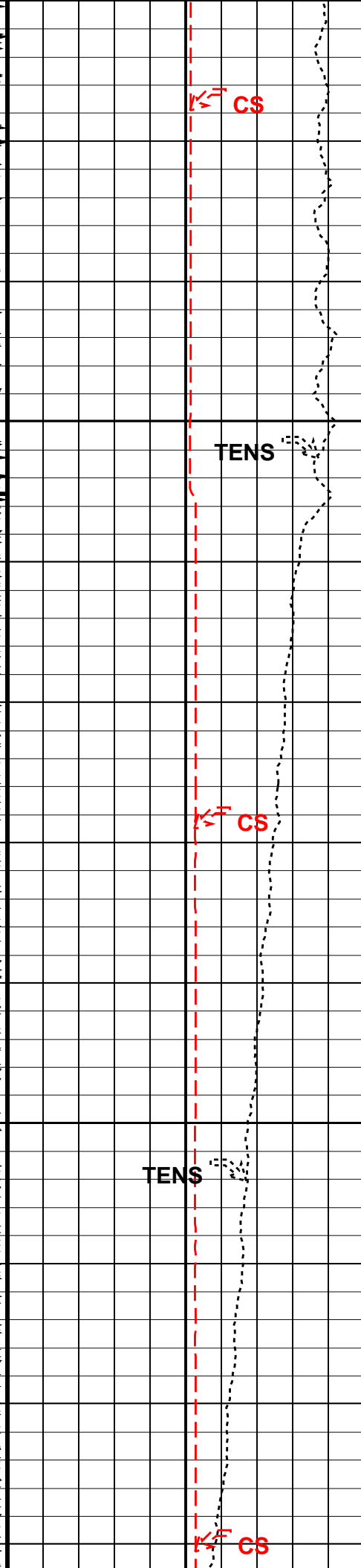
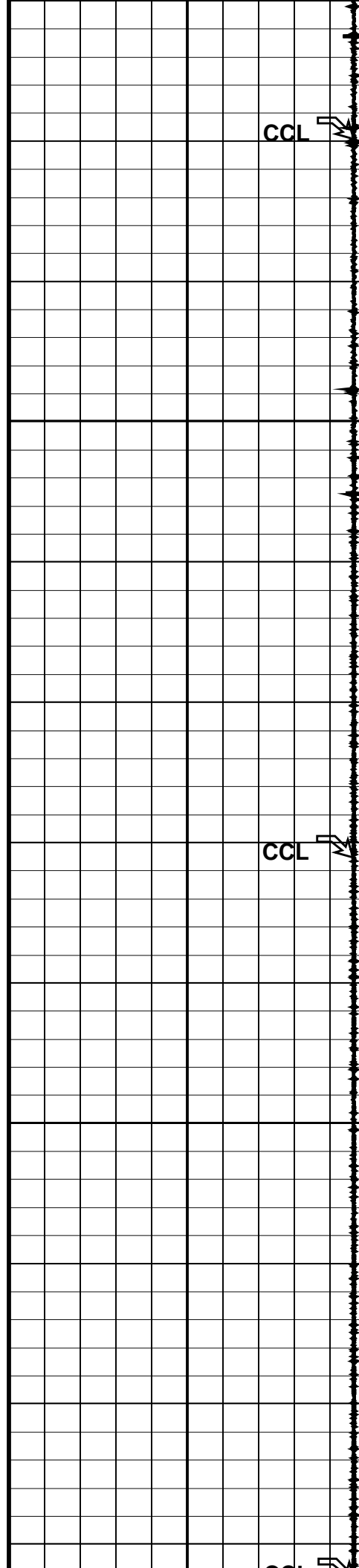
Cable Speed (CS)
0 (F/HR) 50000

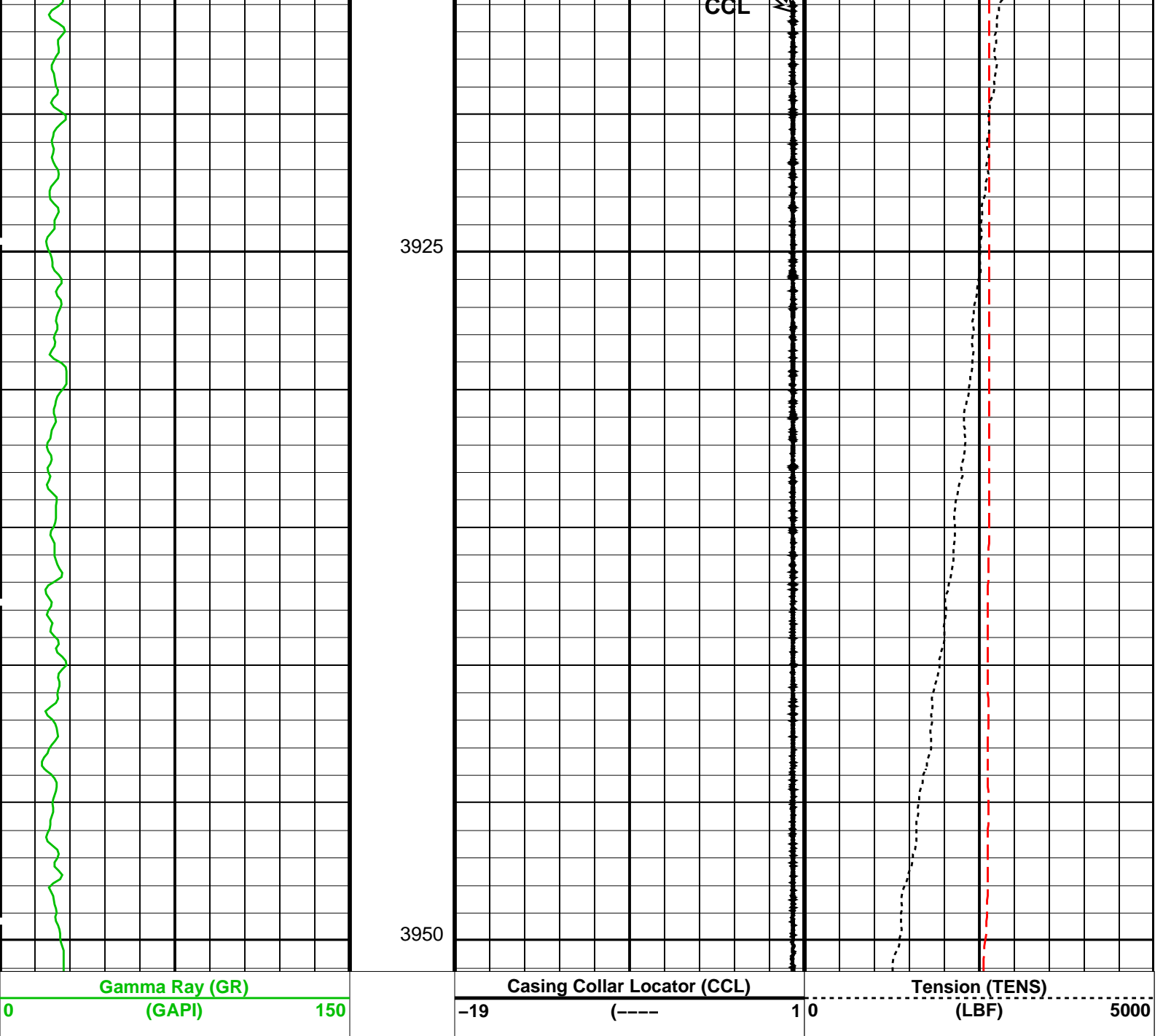




3875

3900





Cable Speed (CS)
0 (F/HR) 50000

PIP SUMMARY

Time Mark Every 60 S

Format: PERFO_1_1 Vertical Scale: 1:200 Graphics File Created: 09-Apr-2007 06:38

OP System Version: 14C0-302
MCM

PGGT-D 14C0-302 SHM_GUN 14C0-302

Output DLIS Files

DEFAULT PERFO_042LUP FN:41 PRODUCER 09-Apr-2007 06:38

MAXIS Field Log

PERFO2 Operational Summary Listing

Device Status Req Depth (M) Obs Depth (M) Time Used

GUN1 Used 3879.0 3879.0 Mon Apr 09 01:31:03 2007

Company: Esso Australia Pty. Ltd.

Well: A12a

Output DLIS Files

DEFAULT PERFO_031LUP FN:30 PRODUCER 09-Apr-2007 01:22 3914.9 M 3764.3 M

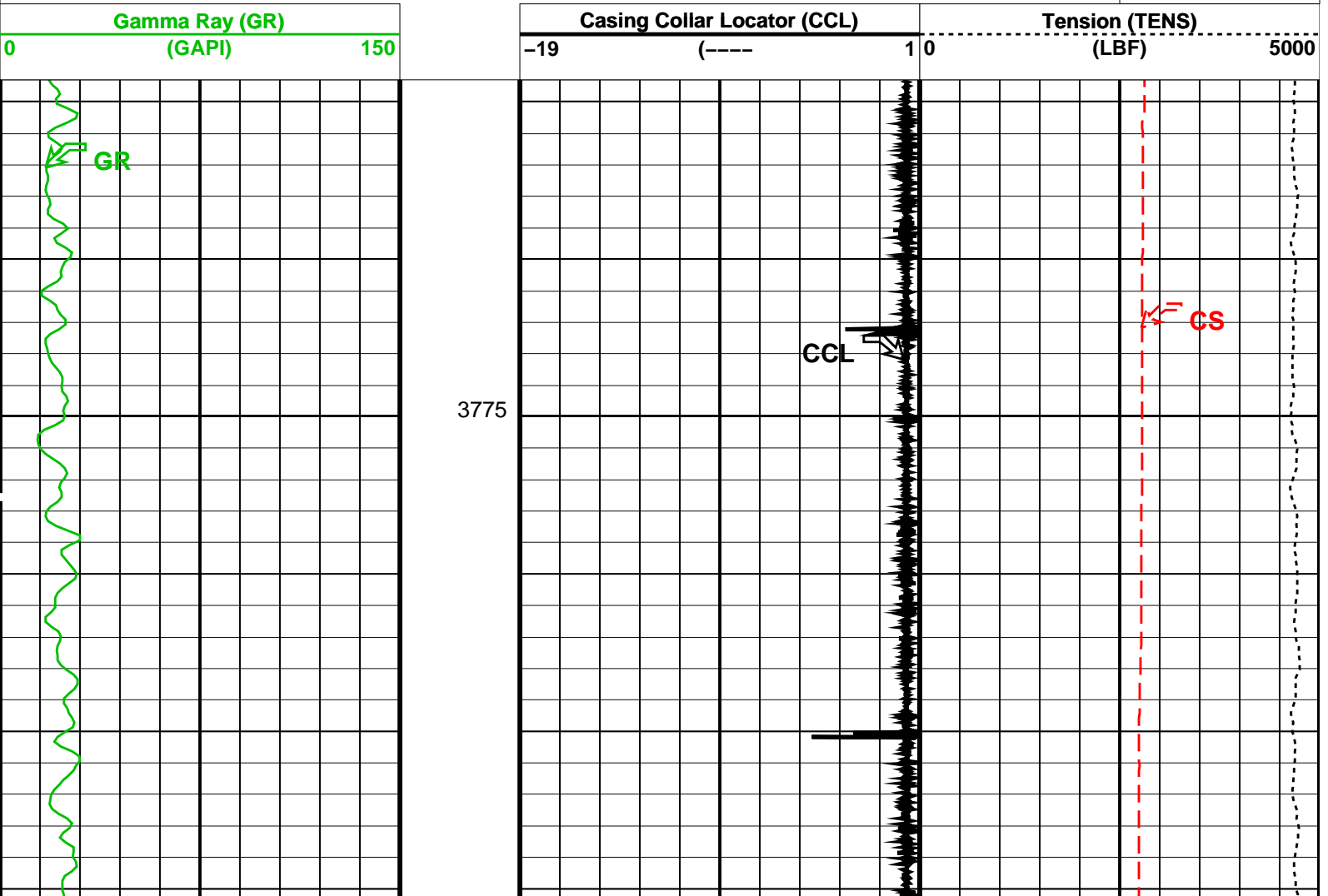
OP System Version: 14C0-302

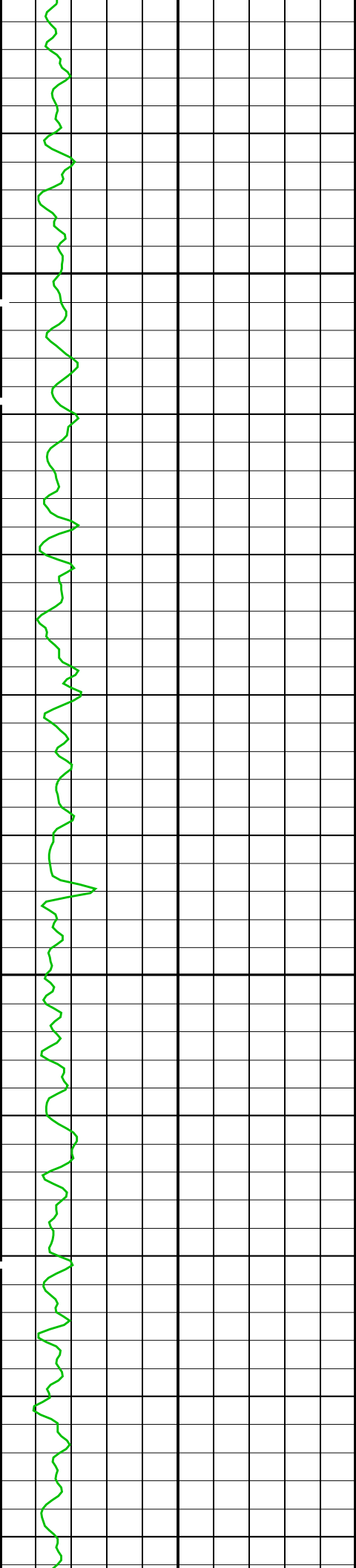
MCM

PGGT-D 14C0-302 SHM_GUN 14C0-302

PIP SUMMARY

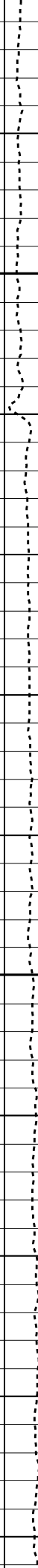
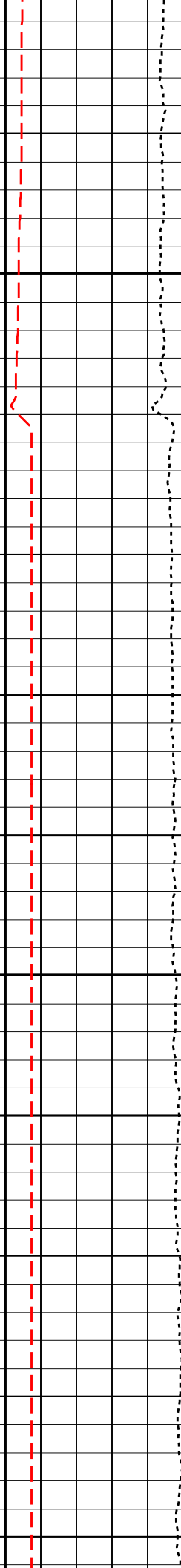
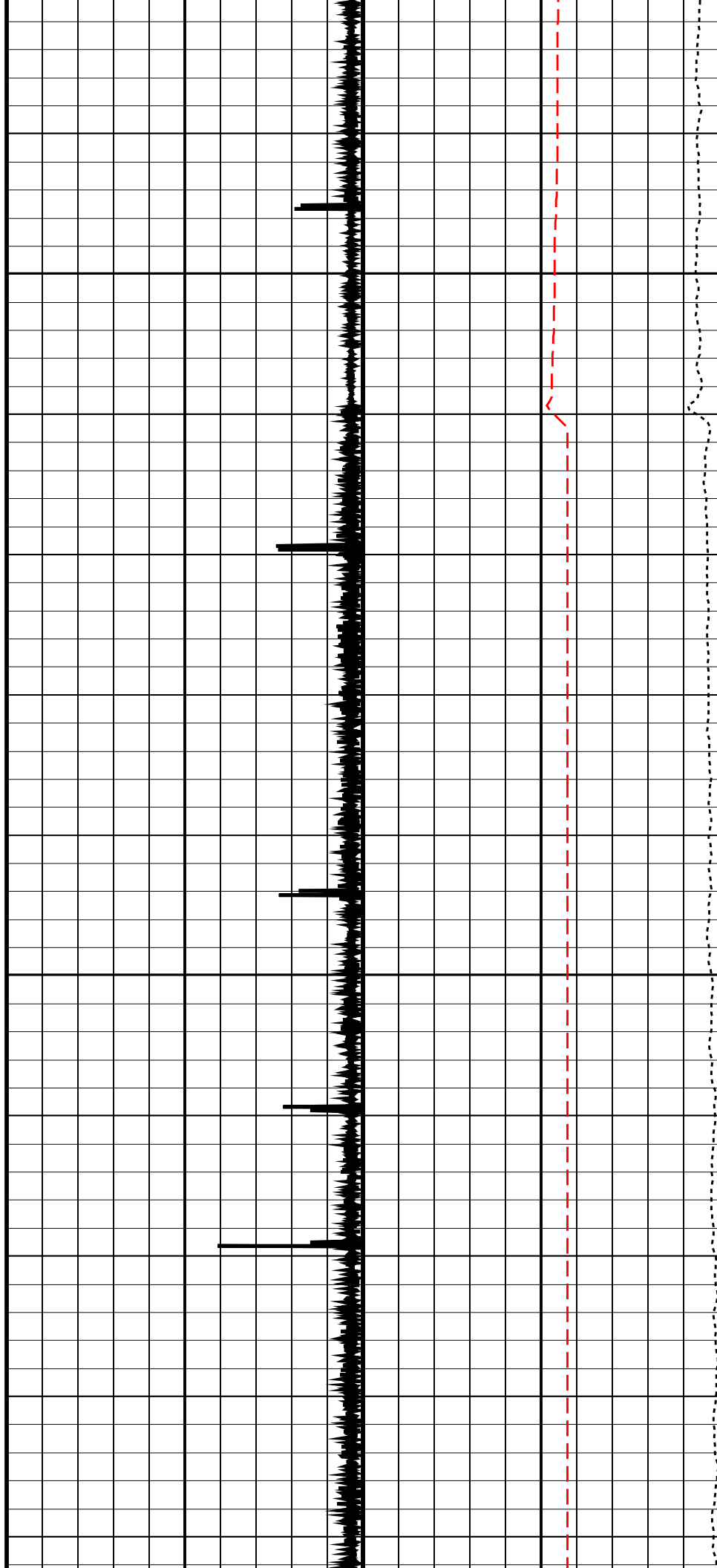
Time Mark Every 60 S

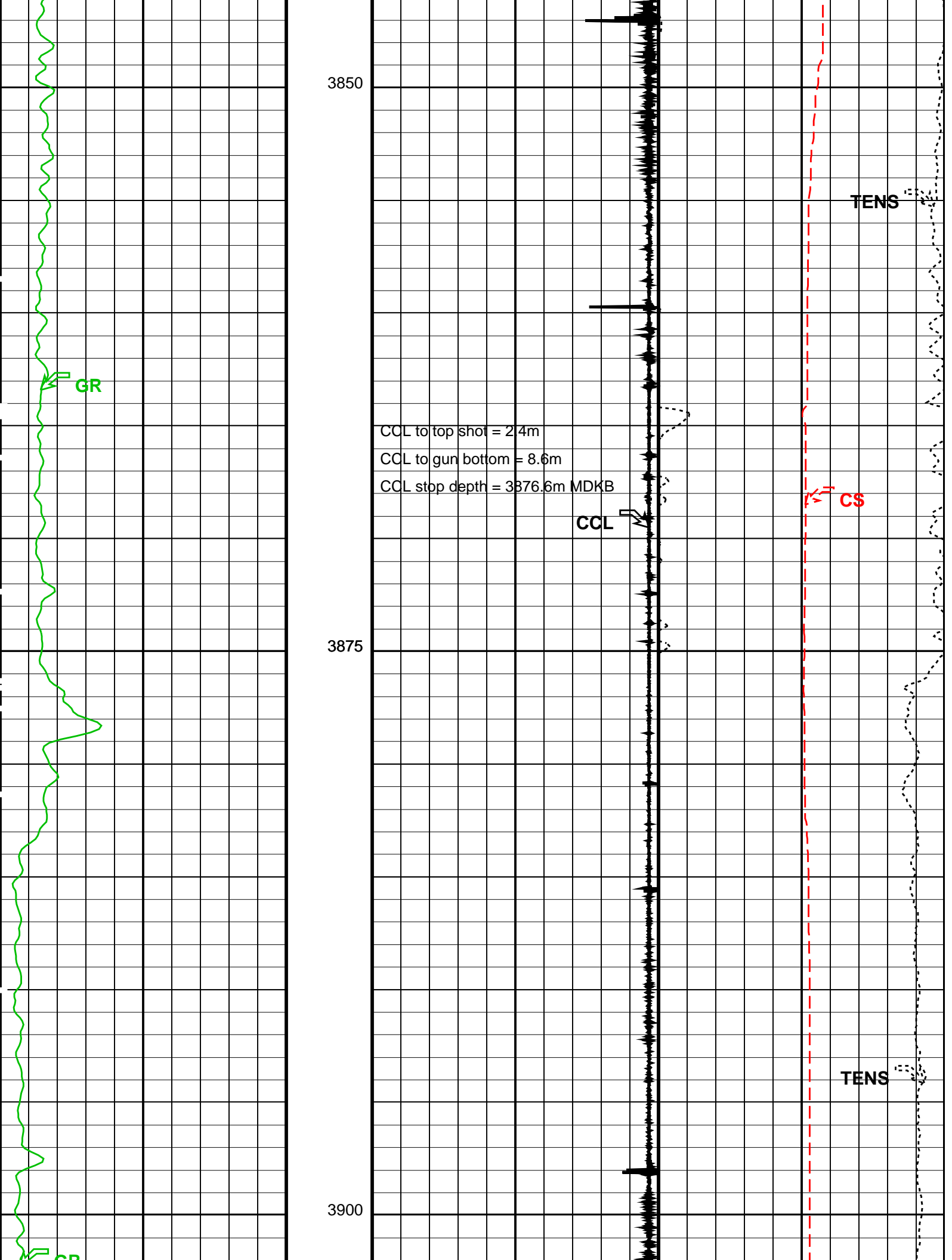
Cable Speed (CS)
0 (F/HR) 50000

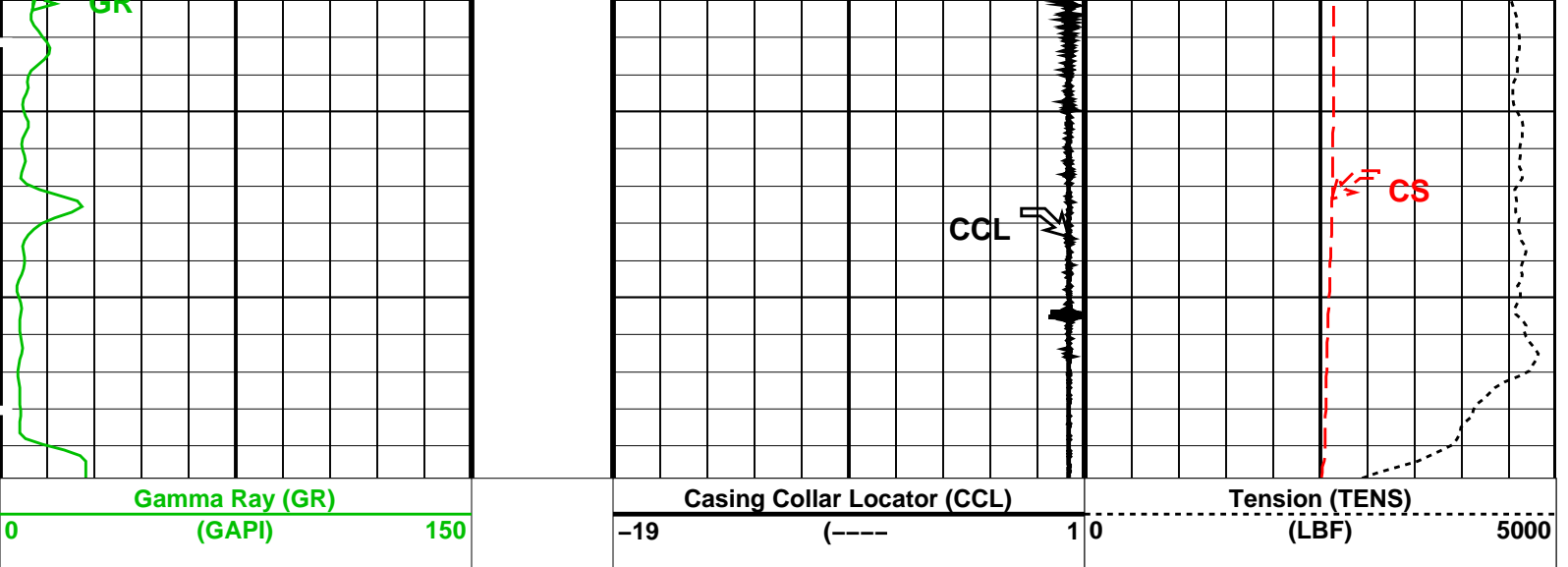


3800

3825







Gamma Ray (GR)
(GAPI) 0 150

Casing Collar Locator (CCL)
-19 (----) 1 0

Tension (TENS)
(LBF) 0 5000

Cable Speed (CS)
0 (F/HR) 50000

PIP SUMMARY

Time Mark Every 60 S


Format: PERFO_1_1 Vertical Scale: 1:200 Graphics File Created: 09-Apr-2007 01:22

OP System Version: 14C0-302
MCM

PGGT-D 14C0-302 SHM_GUN 14C0-302

Output DLIS Files

DEFAULT PERFO_031LUP FN:30 PRODUCER 09-Apr-2007 01:22



4 1/2" HSD Gun Correaltion Pass

MAXIS Field Log

Company: Esso Australia Pty. Ltd. Well: A12a

Output DLIS Files

DEFAULT PERFO_030LUP FN:29 PRODUCER 09-Apr-2007 01:08 3915.3 M 3834.4 M

OP System Version: 14C0-302
MCM

PGGT-D 14C0-302 SHM_GUN 14C0-302

PIP SUMMARY

Time Mark Every 60 S

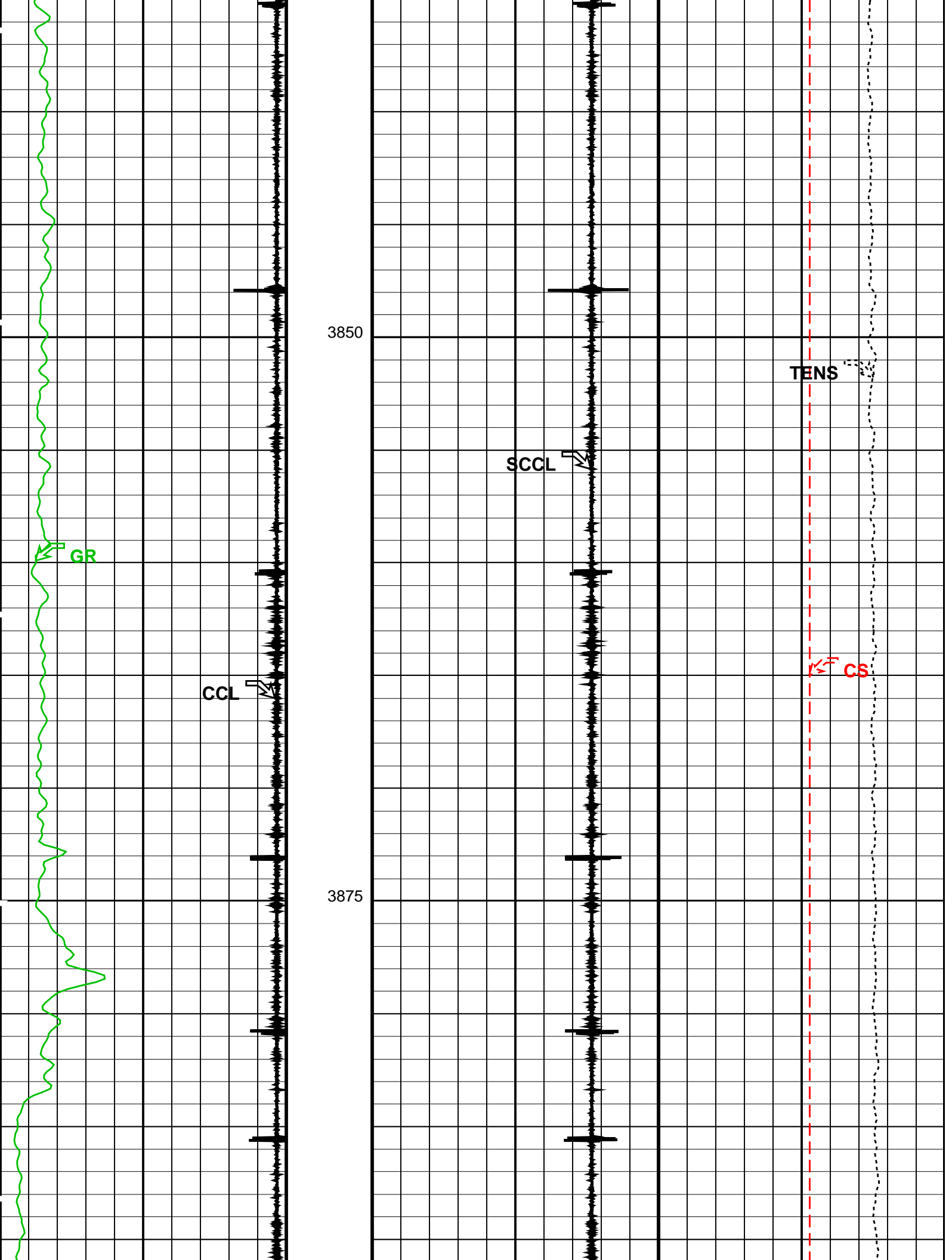
Casing Collar Locator (CCL)
-19 (----) 1

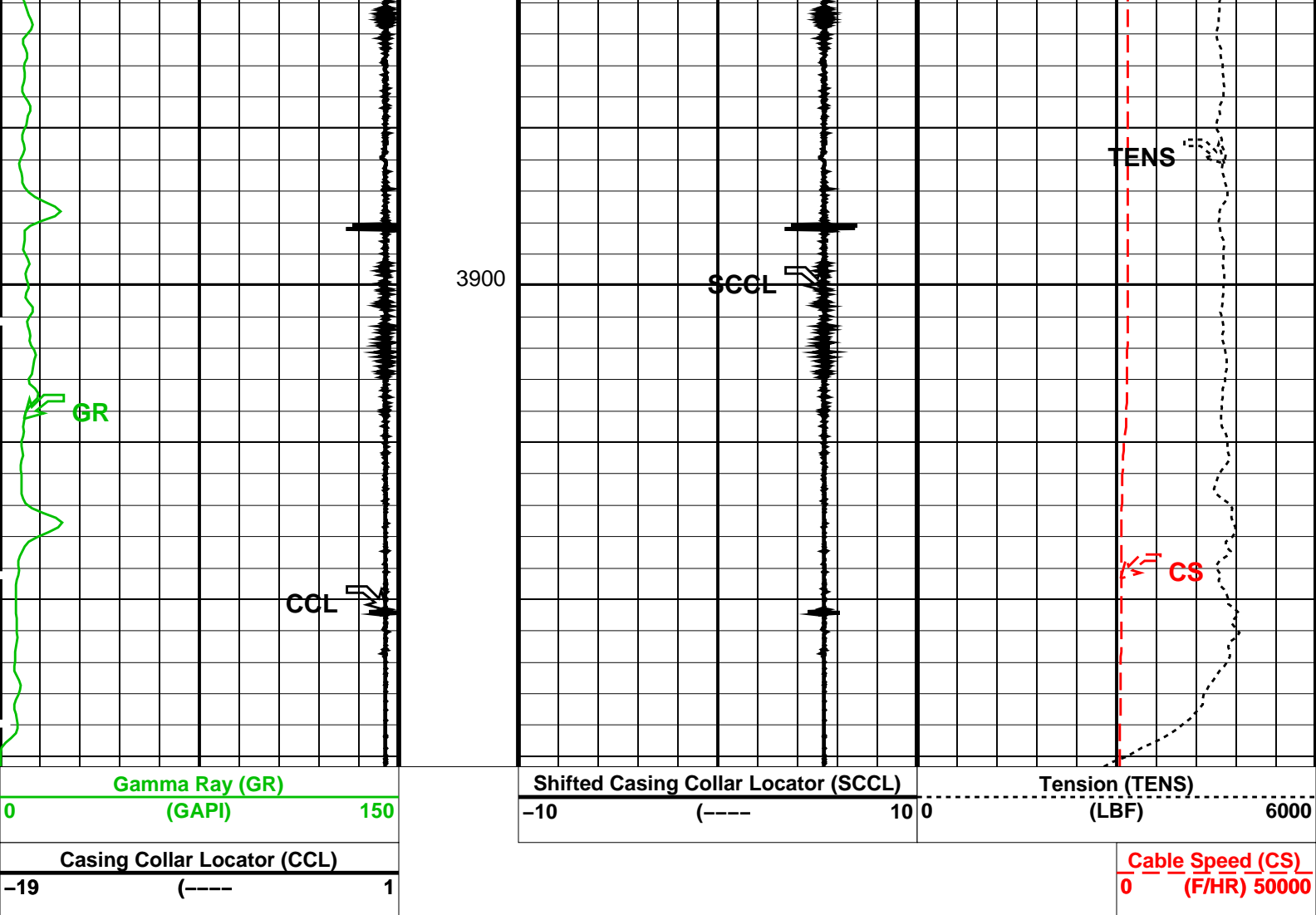
Cable Speed (CS)
0 (F/HR) 50000

Gamma Ray (GR)
(GAPI) 0 150

Shifted Casing Collar Locator (SCCL)
-10 (----) 10 0

Tension (TENS)
(LBF) 0 6000





PIP SUMMARY

Time Mark Every 60 S

Format: PERFO_1 Vertical Scale: 1:200

Graphics File Created: 09-Apr-2007 01:08

OP System Version: 14C0-302

MCM

PGGT-D 14C0-302 SHM_GUN 14C0-302

Output DLIS Files

DEFAULT PERFO_030LUP FN:29 PRODUCER 09-Apr-2007 01:08

Schlumberger

**Junk Basket Run # 1
Correaltion Pass**

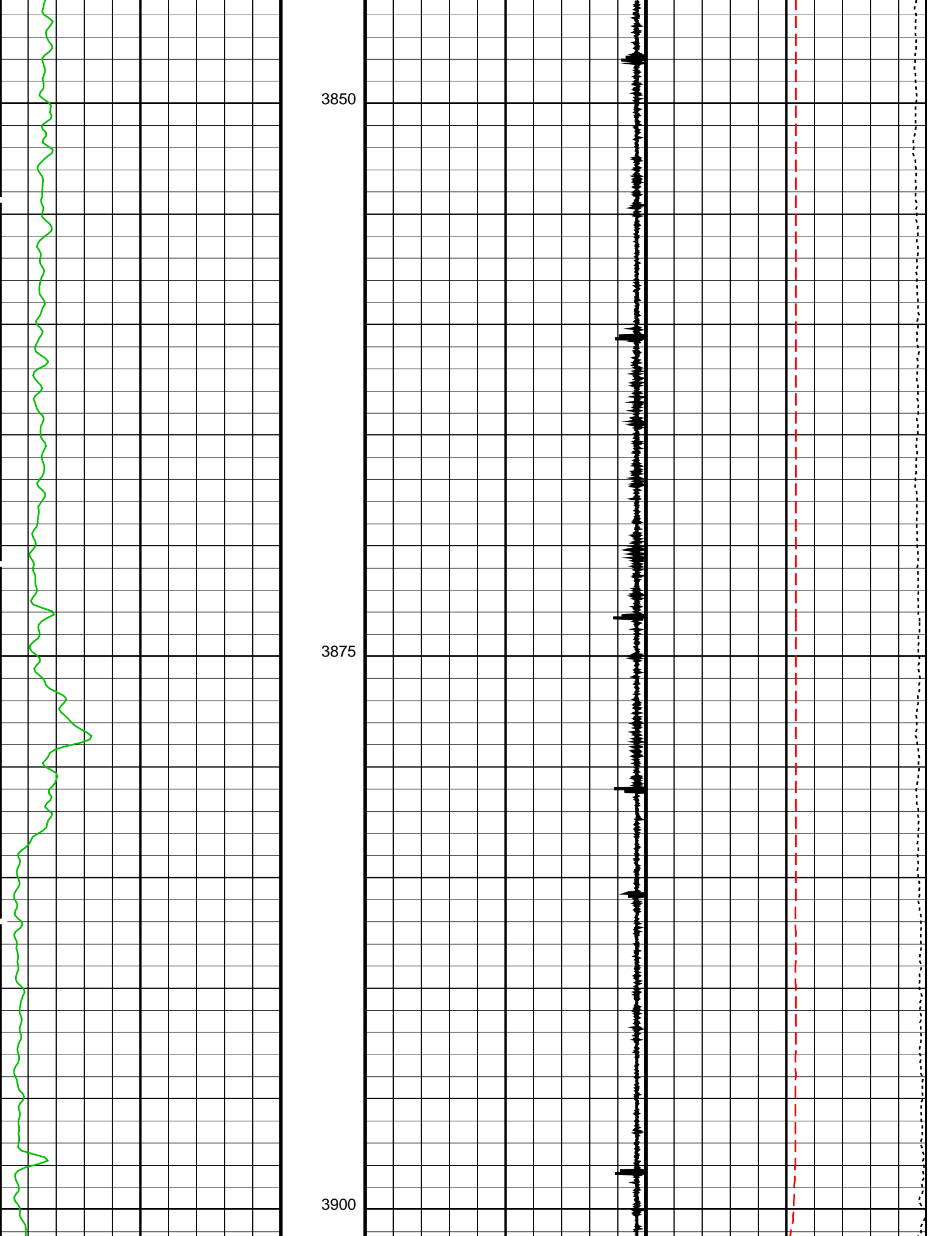
MAXIS Field Log

Company: Esso Australia Pty. Ltd.

Well: A12a

Input DLIS Files

DEFAULT PERFO_010LUP FN:9 PRODUCER 08-Apr-2007 15:20 3901.7 M 3803.4 M



Gamma Ray (GR) (GAPI) 150			Casing Collar Locator (CCL) -19 (----) 1 0			Tension (TENS) (LBF) 5000		
------------------------------	--	--	---	--	--	------------------------------	--	--

Cable Speed (CS) 0 (F/HR) 50000

PIP SUMMARY								
Time Mark Every 60 S								

Parameters		
DLIS Name	Description	Value
DO PP	System and Miscellaneous Depth Offset for Playback Playback Processing	-0.3 M NORMAL

Format: PERFO_1_1	Vertical Scale: 1:200	Graphics File Created: 08-Apr-2007 16:00
-------------------	-----------------------	--

OP System Version: 14C0-302 MCM			
PGGT-D	14C0-302	SHM_GUN	14C0-302

Input DLIS Files					
DEFAULT	PERFO_010LUP	FN:9	PRODUCER	08-Apr-2007 15:20	3901.7 M 3803.4 M
Output DLIS Files					
DEFAULT	PERFO_015PUP	FN:14	PRODUCER	08-Apr-2007 16:00	

Company: **Esso Australia Pty. Ltd.**

Well: **A12a**

Field: **Fortescue**

Rig: **Rig 175**

Country: **Australia**

Schlumberger

4 1/2" HSD PowerJet Omega
Perforation Record